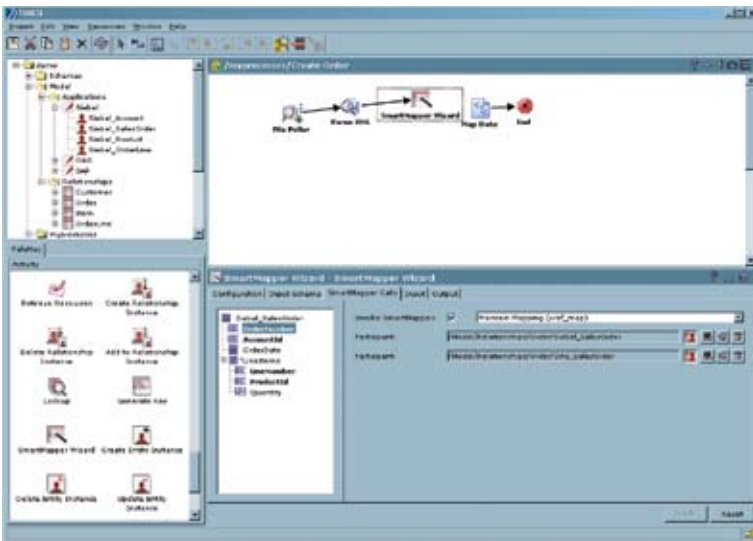


# TIBCO BusinessWorks SmartMapper

Integrating distributed and incompatible applications requires more than just connecting to the data. Different applications describe data in different ways, for example the same customer may be referenced by one ID in SAP and another in a homegrown system. Different applications also use different coding systems (e.g. USA, U.S., United States). Being able to effectively translate, cross-reference, and co-relate data across multiple incompatible data taxonomies is critical to integrating applications and information. Manually creating and maintaining the rules that govern these relationships is time-consuming and makes it impossible to quickly modify these relationships and incorporate such changes into the business processes that rely on them.

TIBCO BusinessWorks™ SmartMapper software streamlines integration processes by allowing customers to easily model and access cross-referencing relationships and code conversion rules. By doing this, SmartMapper lets organizations create a central repository of data relationships that can be leveraged to harmonize data across multiple disparate systems and support the rapid creation and configuration of composite applications and business services.



SmartMapper provides an easy-to-use interface for modeling relationships and creating translation maps between the underlying schemas.

## AT A GLANCE

**TIBCO BusinessWorks SmartMapper** lets organizations assemble a more comprehensive and consistent view of their data by providing the cross-referencing and translation rules to harmonize semantically different data sets across multiple applications.

## BENEFITS

- Improves service quality by providing a single aggregated view of data across systems with disparate data taxonomies.
- Improves operational efficiency by providing centralized management and maintenance of data relationships and approved lookup lists. Cross-referencing can also be used to create unique global identifiers or map to standardized code sets such as ISO.
- Accelerates development, lowers costs, and dramatically improves performance of integration processes with sophisticated dynamic caching and parallel lookup capabilities.



## ATTRIBUTES & CAPABILITIES

### Graphical Modeling and Configuration of Rules

- SmartMapper's graphical interface and wizards enable users to quickly build relationships between data objects and business rules, and to configure those relationships and rules as reusable shared services.
- Relationships can be of any level of complexity – from simple name-value pairs to complex relationships involving multiple keys, objects and applications.

### Assembly of Assets

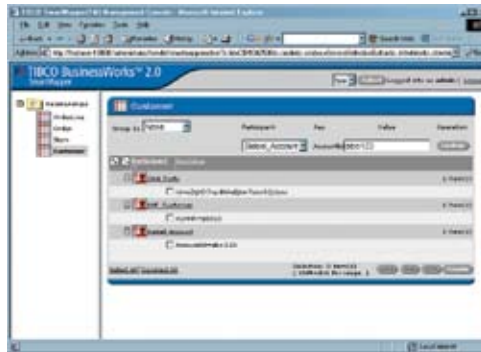
- Lets users invoke cross-referencing services as activities within an application or data integration process and share those services with other processes.
- Provides wizards for performing lookups, generating new IDs and maintaining mappings.

### Flexible Deployment Model

- Delivers high performance and scalability with dynamic data caching, parallel execution and distributed configuration.
- Supports deployment to a file-based memory cache, database or enterprise server.
- Uses XML standards such as XSD for definition, XPath for attributes and XSLT for transformation.

### Management and Administration

- SmartMapper leverages and features all of the deployment, administration, security and management capabilities of TIBCO BusinessWorks.
- Uses the standard TIBCO Administrator™ to maintain data related to rules and cross-reference services.
- Incorporates shared security credentials and configurations into integration projects.



SmartMapper provides a browser-based administration interface for maintaining rules and relationships.

### PLATFORM, STANDARDS AND SECURITY

- Microsoft Windows 2000, XP and 2003 (X86)
- Solaris 2.7, 8 and 9 (SPARC)
- HP-UX 11.x (HPPA, HP JRE)
- Linux 2.4 Kernel (X86, 2.4.6 and up, glibc2.2.2 and up), including Red Hat AS 3.0
- AIX 5.1 and up (RS/6000, IBM JRE), including 5.2 and 5.3

**TIBCO Software Inc.** (NASDAQ: TIBX) is the leading independent business integration software company and a leading enabler of real-time business, helping companies become more cost-effective, more agile and more efficient. TIBCO has delivered the value of real-time business, what TIBCO calls The Power of Now®, to thousands of customers around the world and in a wide variety of industries.

©2006, TIBCO Software Inc. All rights reserved. TIBCO, the TIBCO logo, The Power of Now, TIBCO Software, TIBCO Administrator and TIBCO BusinessWorks are trademarks or registered trademarks of TIBCO Software Inc. in the United States and/or other countries. All other product and company names and marks mentioned in this document are the property of their respective owners and are mentioned for identification purposes only. 01/06



[www.tibco.com](http://www.tibco.com)

Global Headquarters  
3303 Hillview Avenue  
Palo Alto, CA 94304

**Tel:** +1 650-846-1000  
+1 800-420-8450

**Fax:** +1 650-846-1005